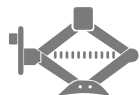


SHEKNOWS



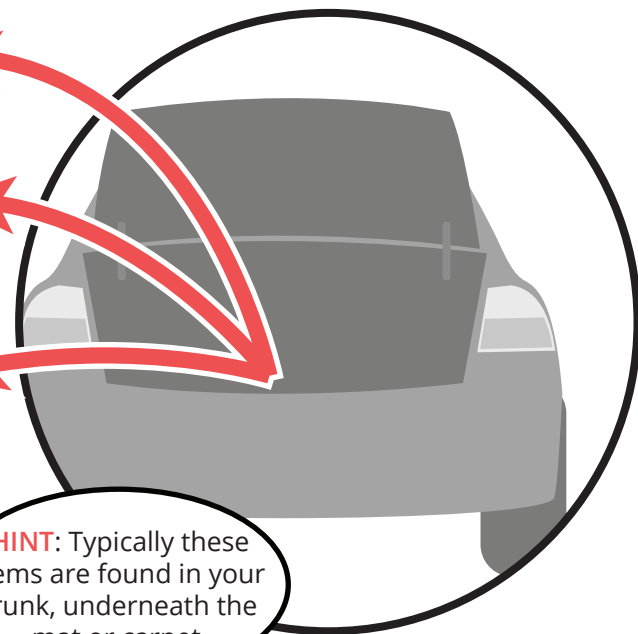
CAR JACK



TIRE IRON

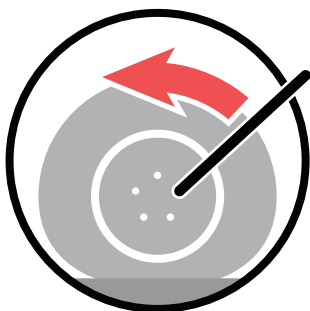
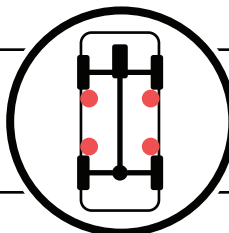


SPARE TIRE



HINT: Typically these items are found in your trunk, underneath the mat or carpet.

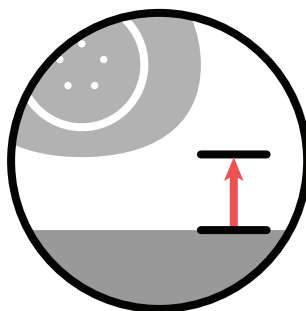
Your car is made with four jack points. The front two are located behind the front tires and the back are in front of the back tires. Find the jack point necessary for your particular tire that needs replacement.



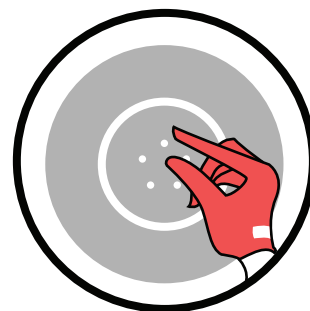
Prior to raising the car, loosen each lug nut with the tire iron. Do not remove, just loosen.



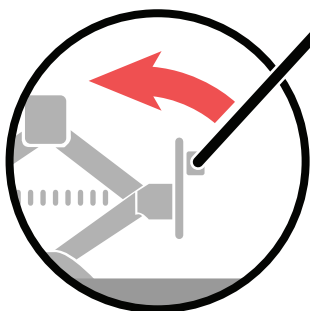
Locate and place car jack into the jack point groove. Slowly raise by turning lever clockwise.



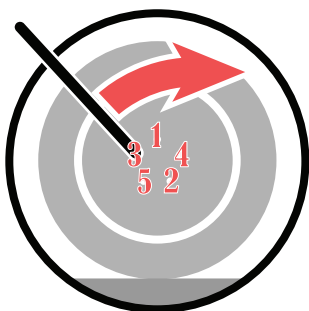
Once the car is raised to desired height, remove the lug nuts completely & pull tire towards yourself.



Add new tire on and finger tighten lug nuts.



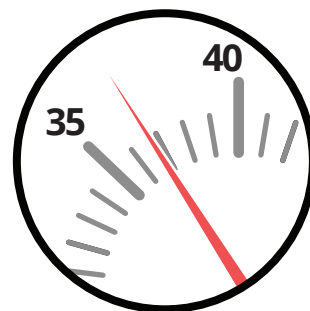
Slowly lower car by turning jack counterclockwise.



Tighten lug nuts with tire iron in a star pattern.



Replace equipment back into the trunk, as your tire may be fixable.



WARNING: Do not drive faster than 35 - 40 mph when on a spare donut, as it could easily blow out.